



COLLEGES
ONTARIO

Student Mobility

Further Education of Ontario College Graduates

February 2008

Data Sources

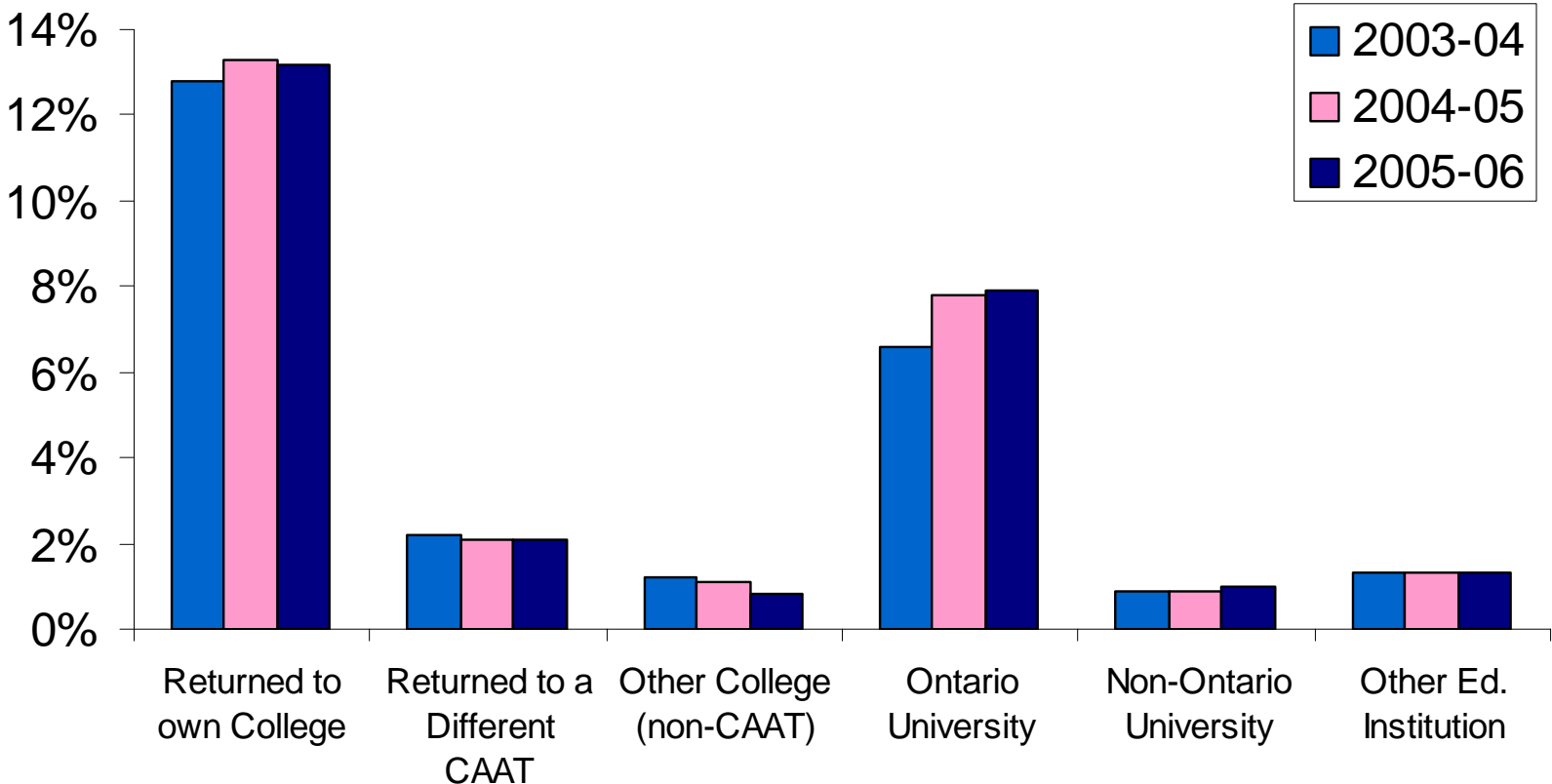
■ Graduate Satisfaction Survey (MTCU)

- telephone survey conducted six months after college graduation
- very high response rate (~ 75%)
- graduates are asked about the college programs from which they graduated, and details regarding the college or university program they are currently attending

■ Student Satisfaction Survey (MTCU)

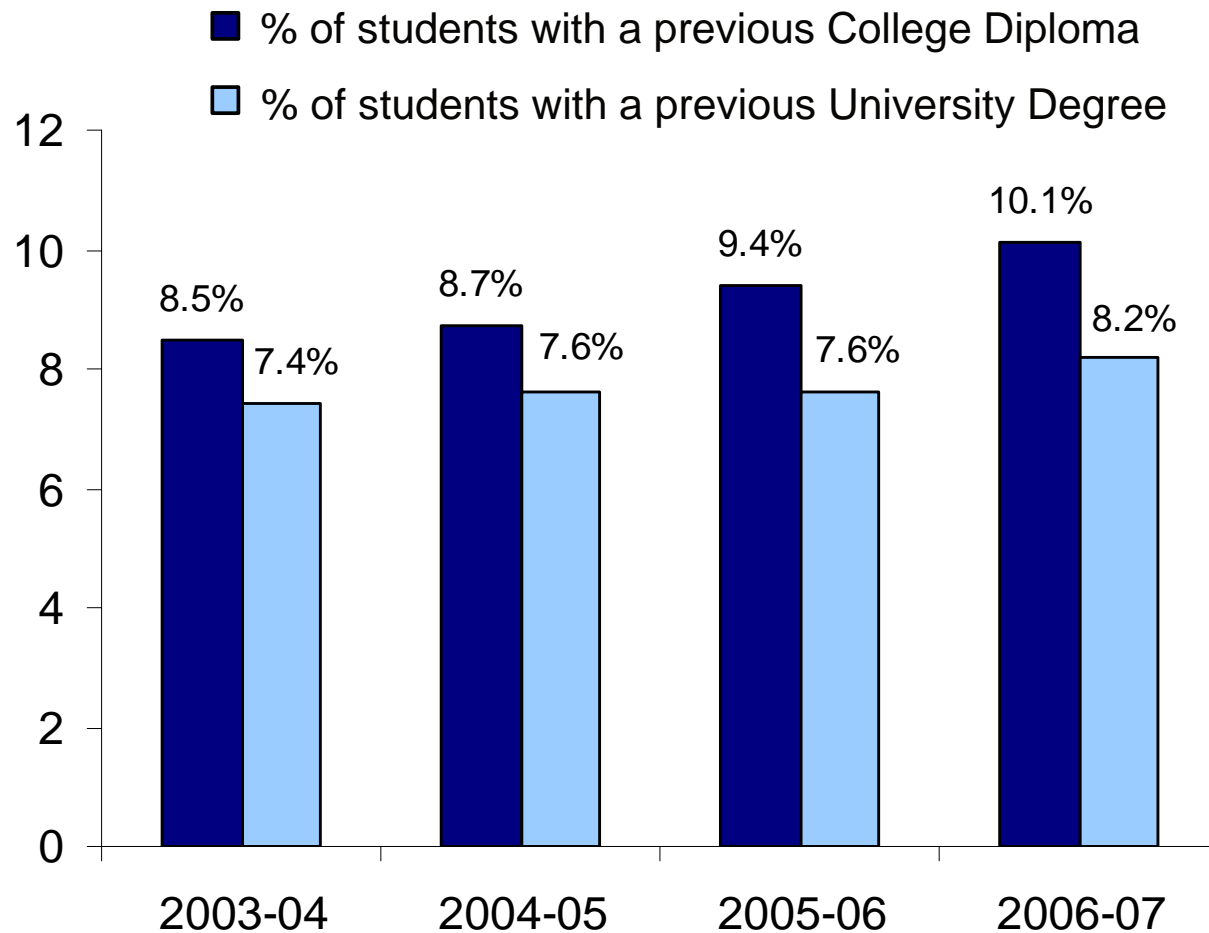
- in-class survey conducted during the second semester
- students are asked about their previous education, current program and main goal for enrolling

Further Education of Ontario College Graduates, by Year



Source: MTCU Graduate Satisfaction Surveys

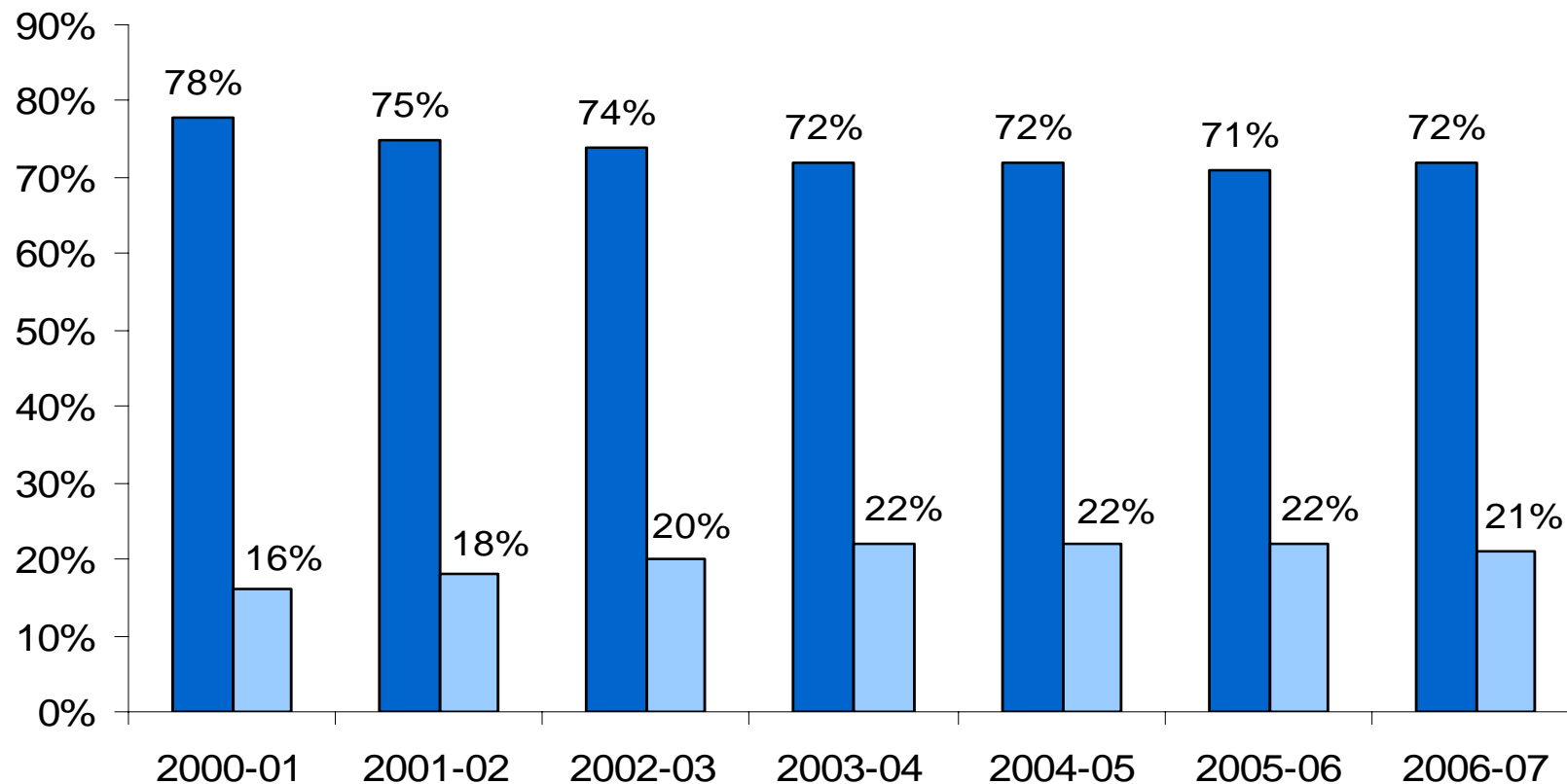
Previous Postsecondary Credentials of Ontario College Students



Source: MTCU Student Satisfaction Surveys

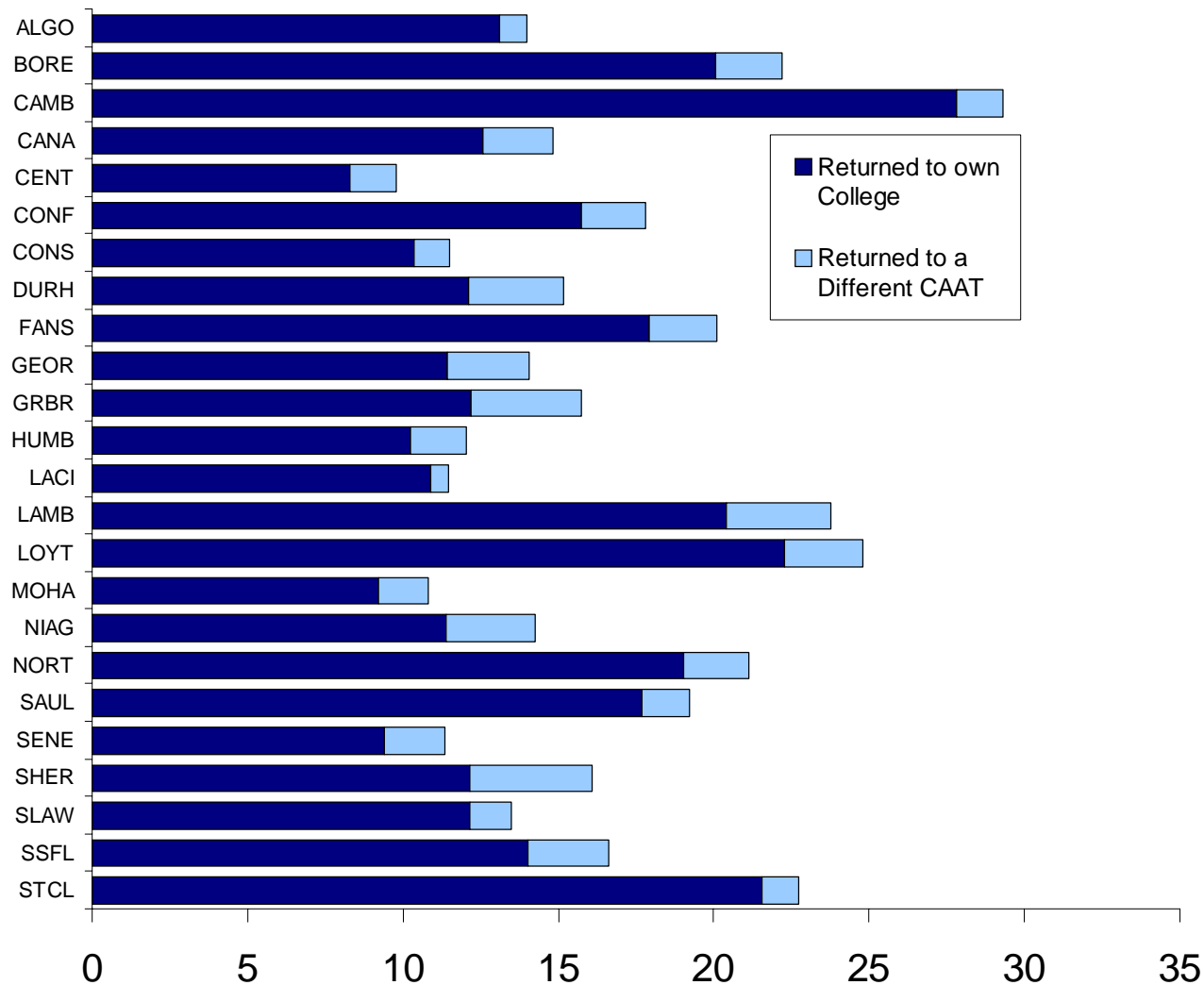
'Main Goal' of College Students in Enrolling in their College Programs

■ To prepare for employment/career ■ To prepare for further college or university study



Source: MTCU Student Satisfaction Surveys (Q52)

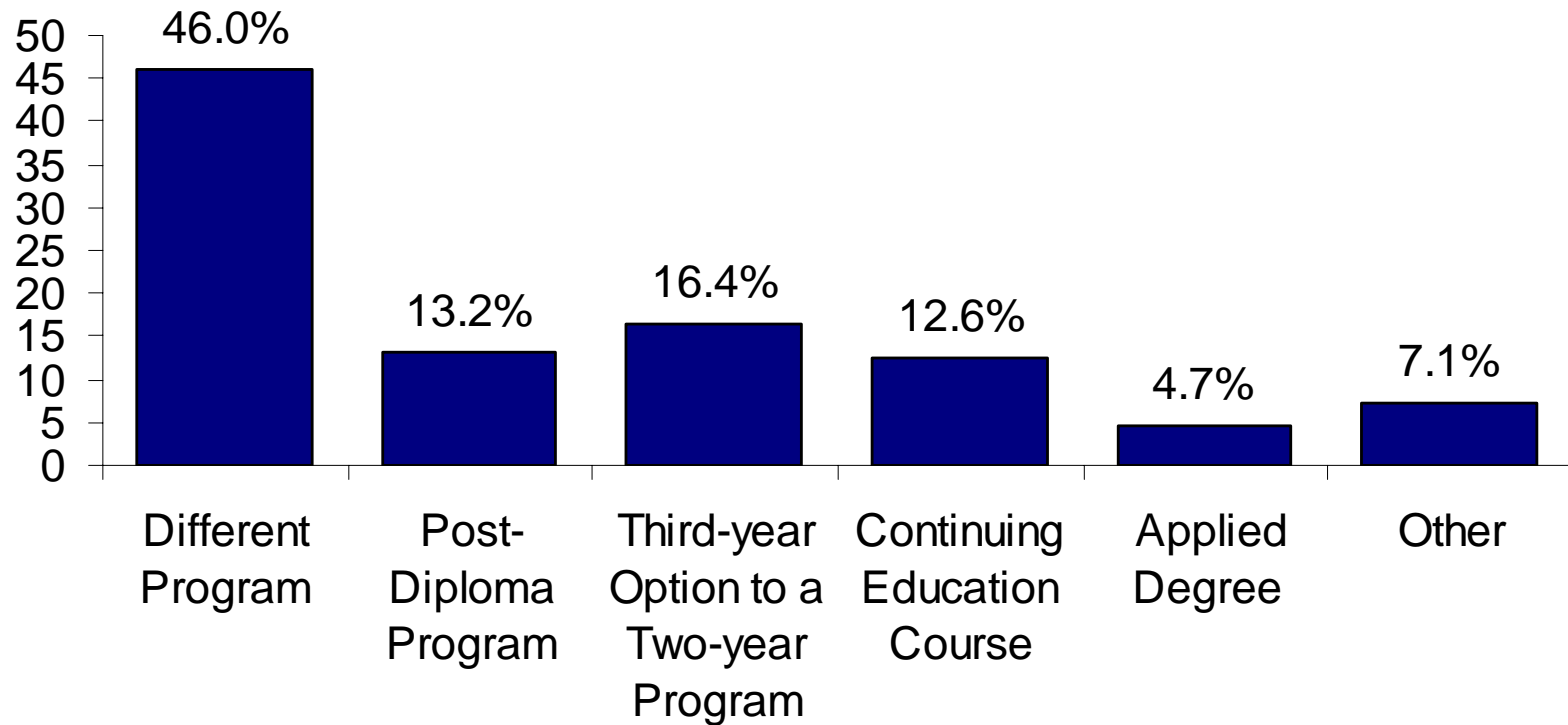
Percent of 2005-06 Ontario College Graduates Returning to College, by Institution



College – College Mobility: Top Ten Programs by Origin

| <u>Program graduated from:</u> | <u># of surveyed graduates attending college</u> | <u>% of graduates from that program attending college</u> |
|-------------------------------------|--------------------------------------------------|-----------------------------------------------------------|
| Preparatory Health Sciences | 720 | 71.4% |
| General Arts and Science (one-year) | 607 | 52.1% |
| Art Fundamentals | 273 | 61.2% |
| General Arts and Science (two-year) | 214 | 28.3% |
| Early Childhood Education | 200 | 9.9% |
| Police Foundations | 186 | 9.9% |
| Personal Support Worker | 175 | 13.5% |
| Business - Accounting | 158 | 37.1% |
| Office Administration - General | 158 | 21.0% |
| Mechanical Techniques | 137 | 46.4% |

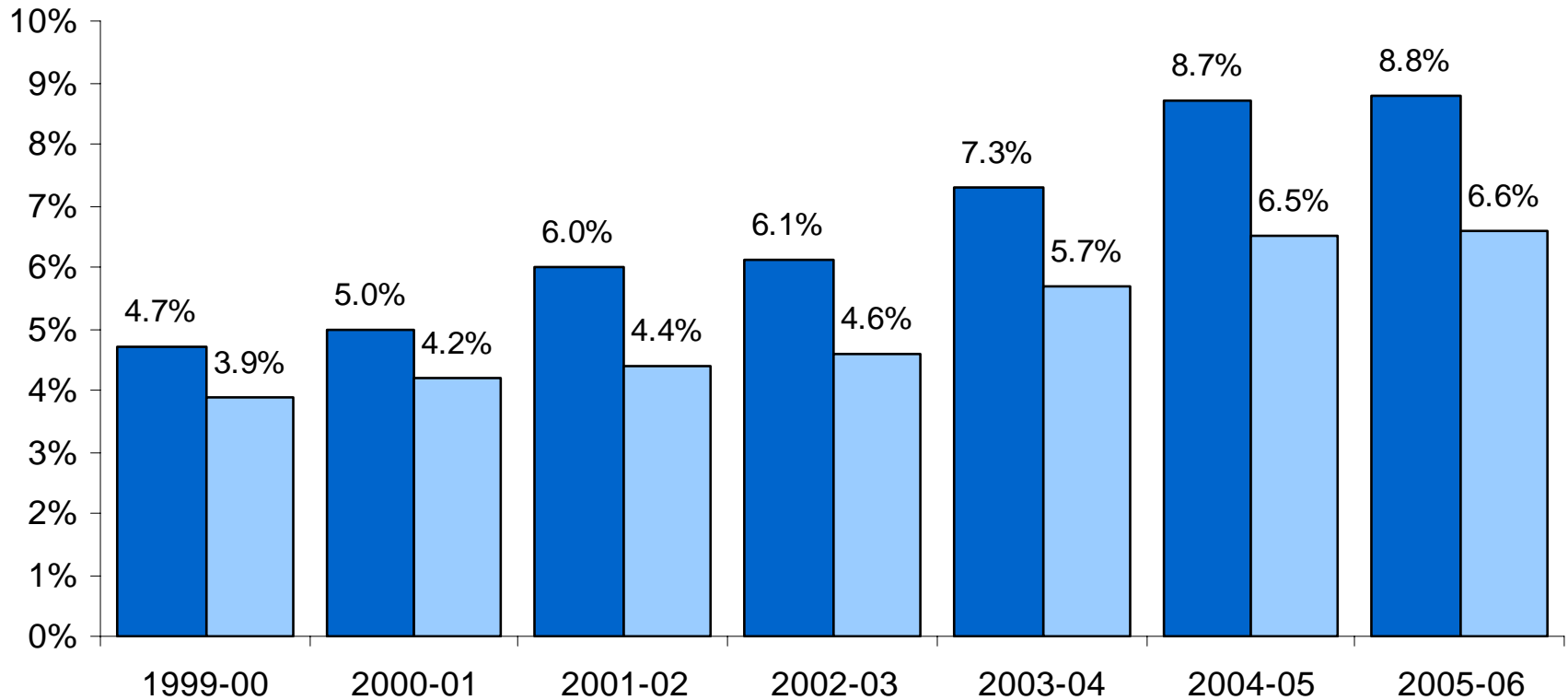
Program Destination – College Graduates Returning to College



Source: MTCU Graduate Satisfaction Survey (Q3), 2005-06 Graduates

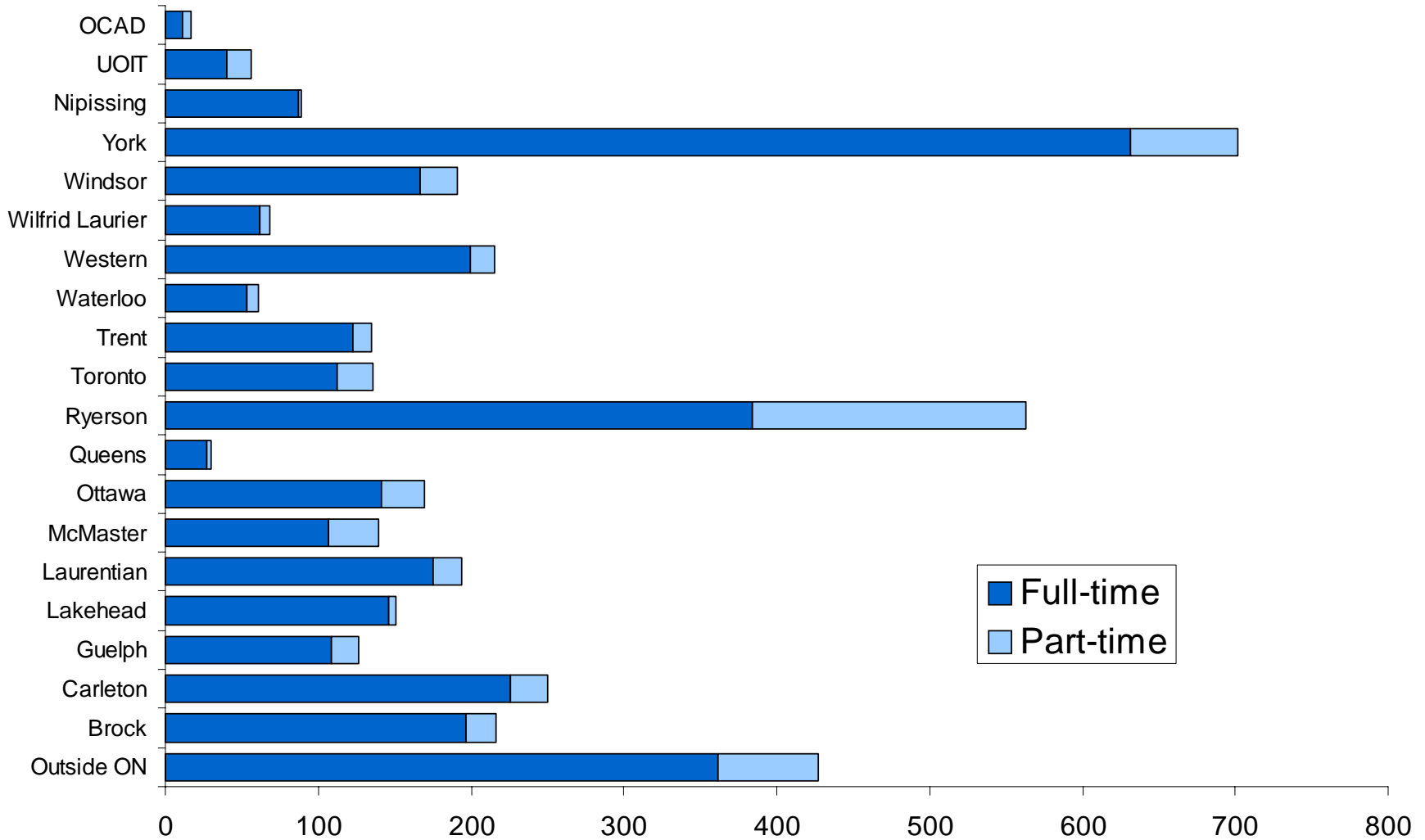
College Graduates Attending University, by Year

- % of graduates attending any type of university program in Ontario or elsewhere
- % of graduates attending an Ontario university degree program



Source: MTCU Graduate Satisfaction Surveys

Number of 2005-06 Ontario College Graduates Attending University, by Institution

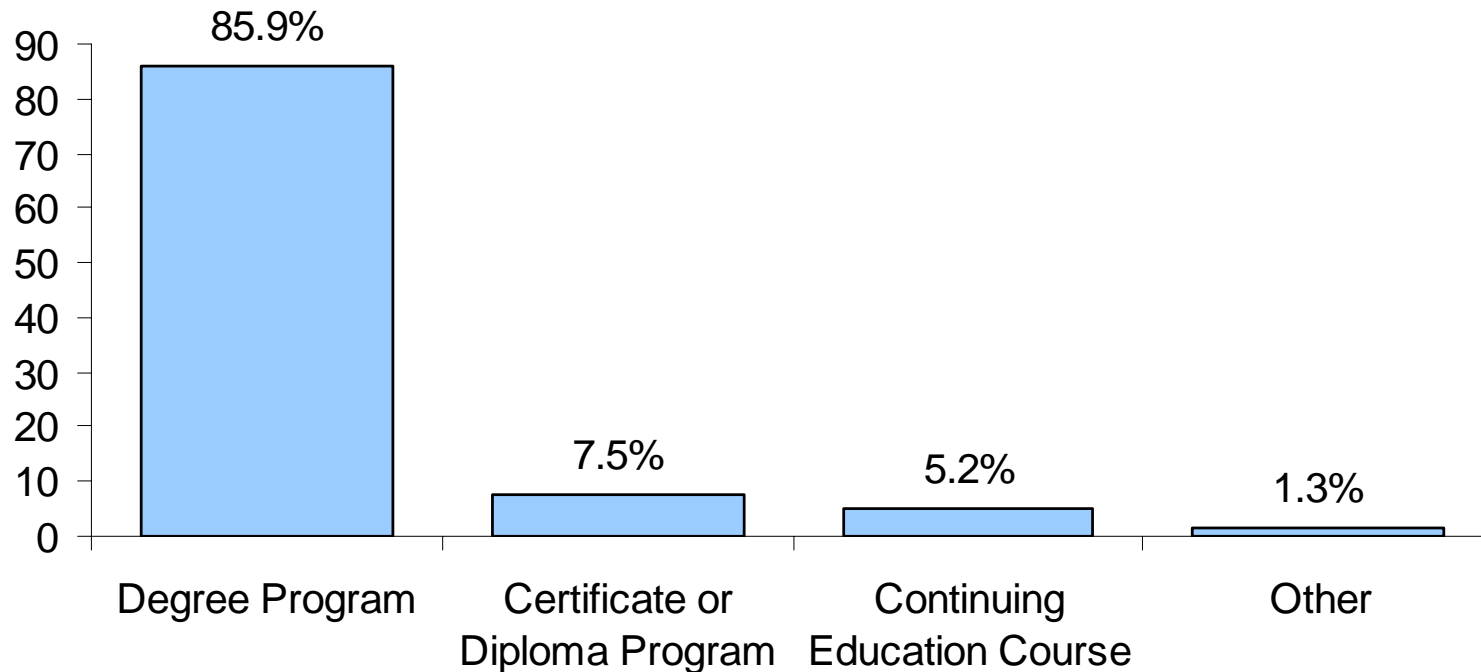


College – University Mobility: Top Ten Programs by Origin

| <u>Program graduated from:</u> | <u># of surveyed graduates attending university</u> | <u>% of surveyed graduates from that program attending university</u> |
|-------------------------------------------|-----------------------------------------------------|-----------------------------------------------------------------------|
| Early Childhood Education | 404 | 20.0% |
| Police Foundations | 315 | 16.7% |
| General Arts and Science (two-year) | 248 | 32.8% |
| General Arts and Science (one-year) | 244 | 21.0% |
| Social Service Worker | 224 | 16.8% |
| Business Administration | 176 | 22.9% |
| Business Administration - Accounting | 166 | 20.8% |
| Preparatory Health Sciences | 138 | 13.7% |
| Business Administration - Marketing | 102 | 16.6% |
| Business Administration - Human Resources | 79 | 17.2% |

Source: MTCU Graduate Satisfaction Survey, 2005-06 Graduates

Program Destination – College Graduates Attending University



Source: MTCU Graduate Satisfaction Survey (Q4), 2005-06 Graduates