



COLLEGES ONTARIO | COLLÈGES ONTARIO

College **RESOURCES**

2011 ENVIRONMENTAL SCAN

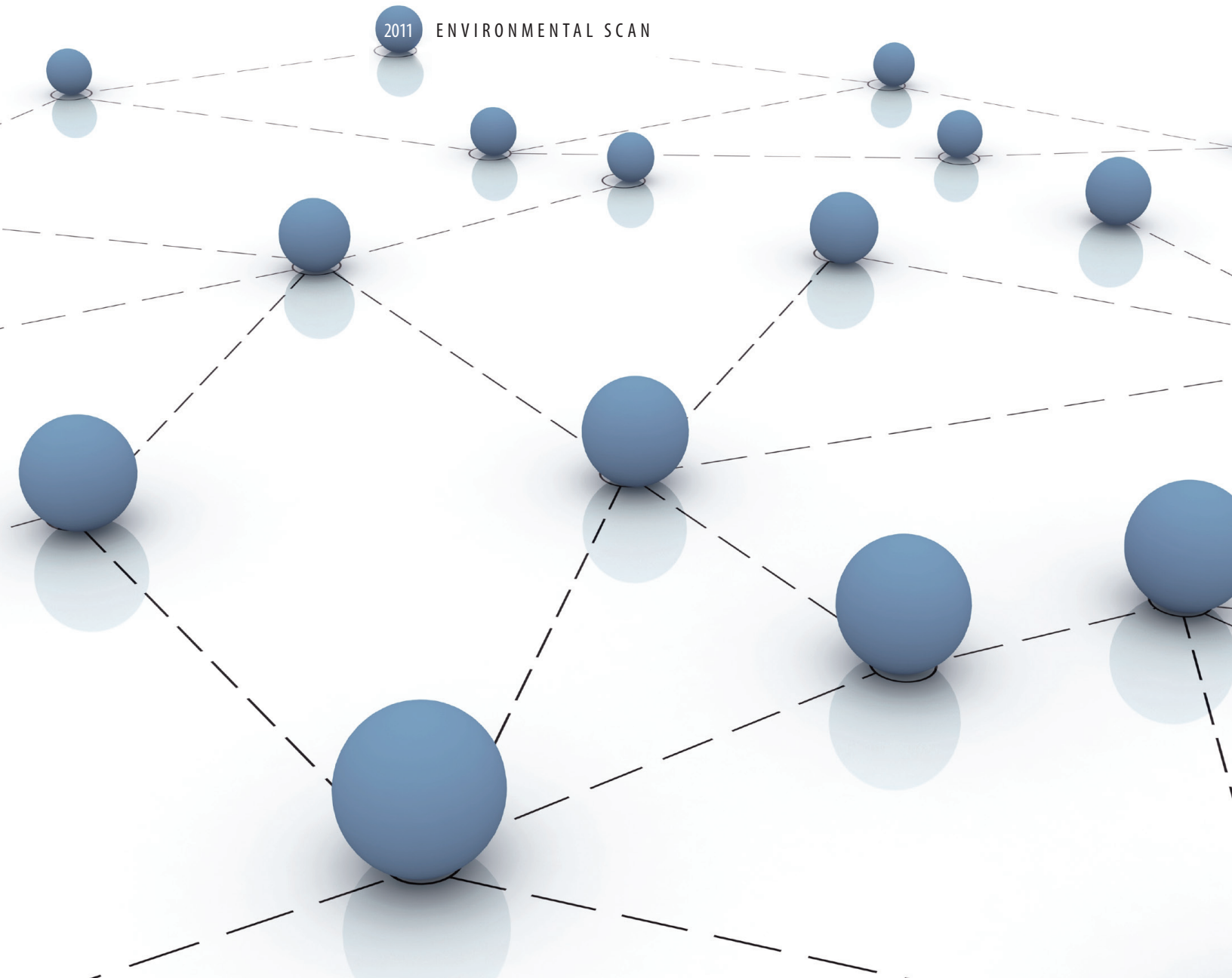


TABLE OF CONTENTS

1.0 Highlights	2	4.0 Human resources trends	9
2.0 College system revenues and expenses	3	Table 2. College staffing levels, 2009-10	9
Figure 1. Ontario college system revenue, 2009-10	3	Figure 6. Changes in full-time college staff and FTE enrolment levels, 1994-95 to 2009-10	10
Figure 2. Ontario college system expense, 2009-10	4	5.0 Student financial aid	11
3.0 Trends in college funding	5	Table 3. Levels of student assistance and number of recipients	11
Figure 3. Enrolment and revenue changes, 1996-97 to 2011-12	5	Table 4. OSAP default rates by type of institution, 2008 and 2009	12
Figure 4. Estimated grant and tuition fee revenue per college student	6	Figure 7. OSAP loan default rates, 1999 to 2009	13
Figure 5. Operating funding and regulated tuition fees per student, Ontario education sectors, 2010-11	7	6.0 Appendices	14
Table 1. Summary of apprenticeship per diem history, 1995-96 to 2010-11	8		

1.0 HIGHLIGHTS

REVENUES AND EXPENSES

- In 2009-10, college system revenues totaled \$3.2 billion. Grants accounted for half of college system revenues.
- College system expenses amounted to about \$3.1 billion. Like other organizations in both the public and private sectors, salaries and benefits are by far the largest expense item for colleges.

TRENDS IN COLLEGE FUNDING

- For 2011-12, real operating funding per student (full-time equivalent, or FTE) is about four per cent higher than it was in 1996-97.
- Per student revenue from operating grants and tuition fees for Ontario colleges continues to be the lowest among the provinces. Funding per student for Ontario colleges also continues to significantly lag that for secondary schools and universities.
- In current dollars, the apprenticeship per diem has decreased slightly since 1995-96. After inflation is taken into account, the per diem has decreased by 27 per cent. The student in-school fee has offset some of this reduction.

HUMAN RESOURCES

- Colleges employ close to 40,000 people. From 1994-95 to 2009-10, the number of full-time staff employed at colleges decreased marginally, whereas the number of students (FTEs) increased significantly.

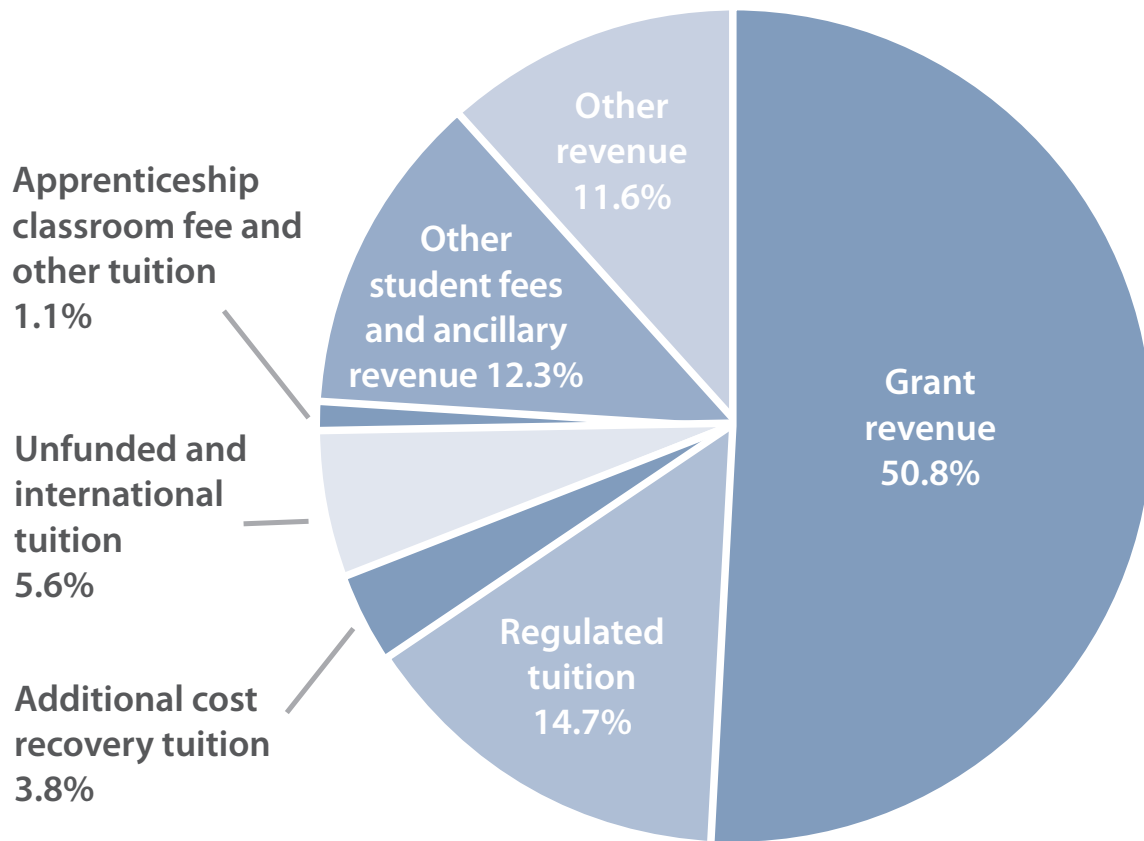
STUDENT FINANCIAL AID

- In 2009-10, about 81,000 college students were OSAP recipients.
- The OSAP default rate for the college system was 11 per cent in 2009, slightly higher than in 2008 (10.6 per cent).

2.0 COLLEGE SYSTEM REVENUES AND EXPENSES

Figure 1. Ontario college system revenue, 2009-10

Total revenue = \$3,244,468,989



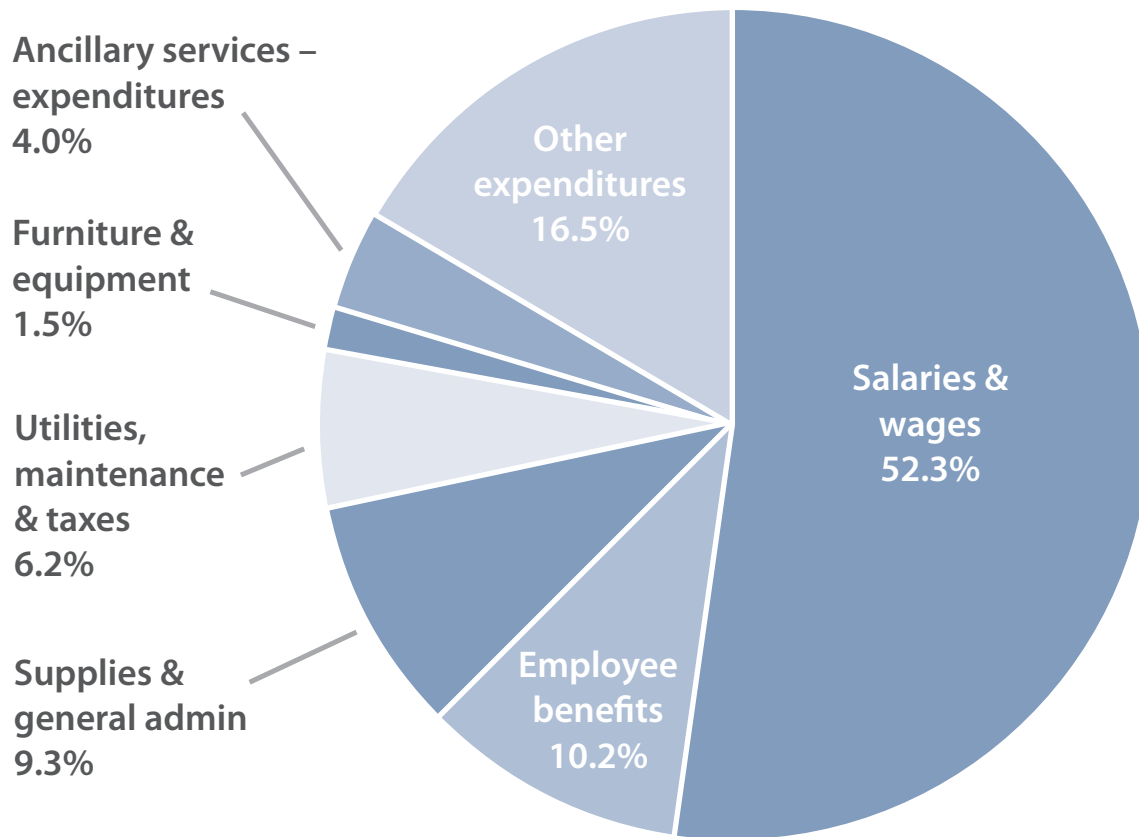
Source: Ontario Ministry of Training, Colleges and Universities.

- Grants account for half of college system revenues. Tuition fees are also a significant source of revenue for colleges and account for close to one-quarter of system revenue.

2.0 COLLEGE SYSTEM REVENUES AND EXPENSES – CONTD.

Figure 2. Ontario college system expense, 2009-10

Total expense = \$3,071,680,210

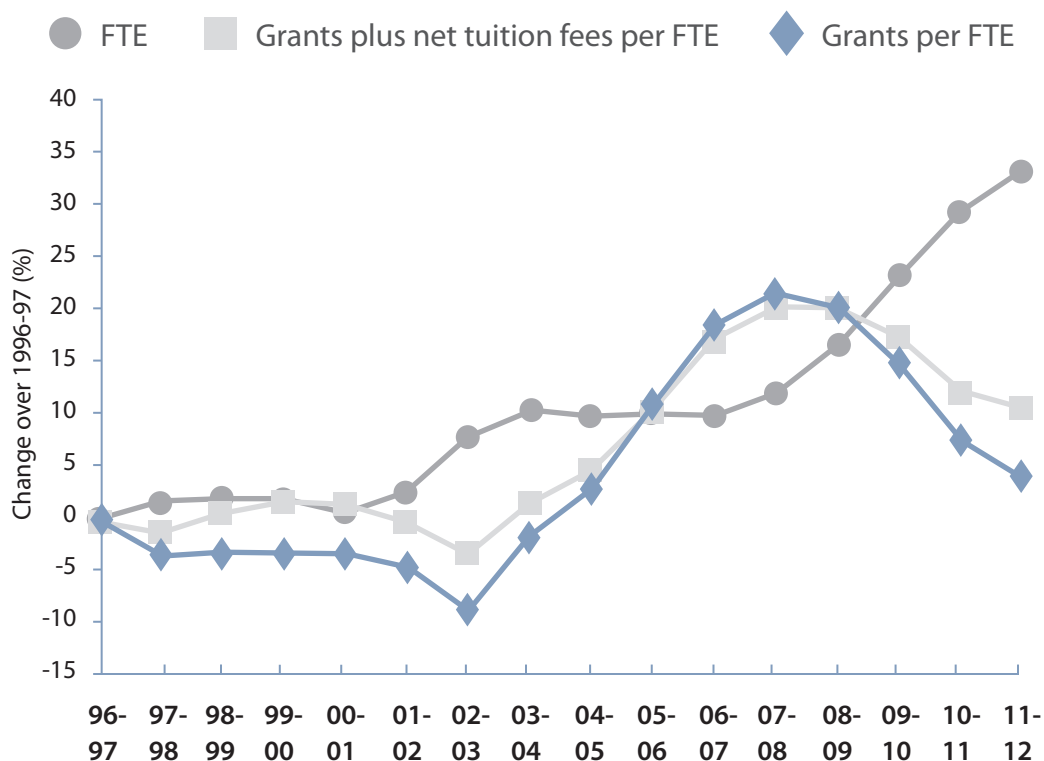


Source: Ontario Ministry of Training, Colleges and Universities.

- College system expenses include items such as flow-through expenditures, contract services, scholarships and the tuition set-aside.
- Compensation costs (salaries and benefits) are the largest expense item for colleges.

3.0 TRENDS IN COLLEGE FUNDING

Figure 3. Enrolment and revenue changes, 1996-97 to 2011-12 (Indexed to 1996-97)



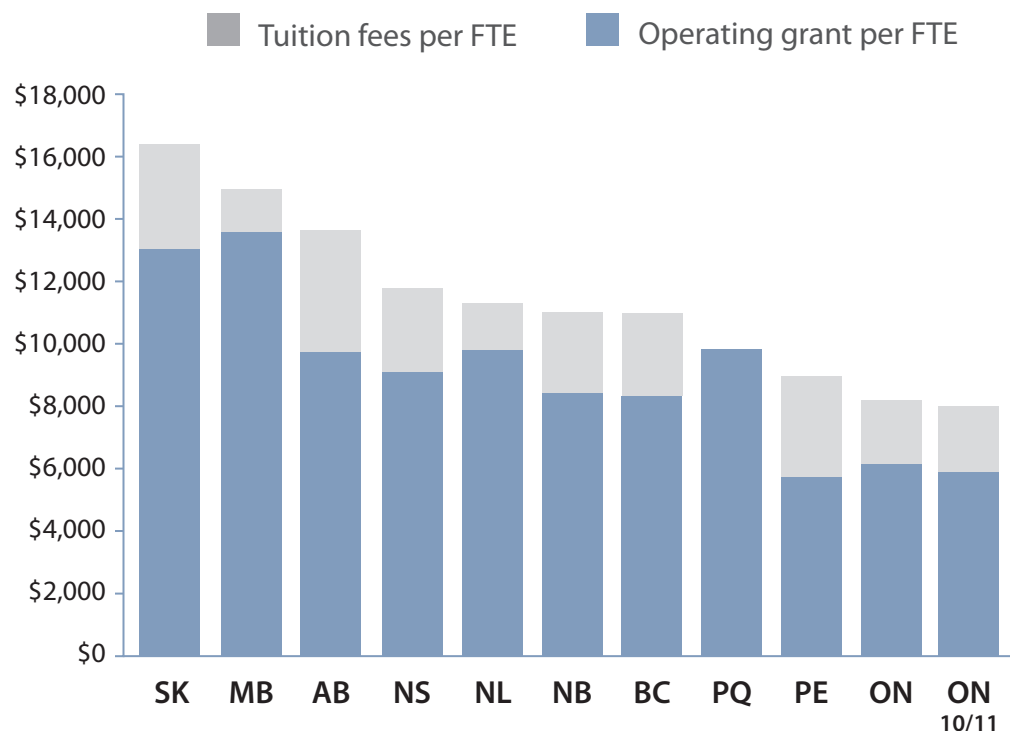
Notes: Revenue figures are in constant 2002 dollars. Figures exclude tuition set-aside, collaborative and second-entry nursing, and clinical education funding for collaborative nursing. Regulated tuition fees.

Sources: Ontario Ministries of Training, Colleges and Universities and Finance; Statistics Canada and Colleges Ontario.

- In 2011-12, real operating grants per student are expected to be about four per cent higher than in 1996-97.
- When tuition fees and operating grants are considered together, real per student revenue is expected to be about 10 per cent higher than in 1996-97.

3.0 TRENDS IN COLLEGE FUNDING – CONTD.

Figure 4. Estimated grant and tuition fee revenue per college student
All provinces 2009-09 and Ontario 2010-11



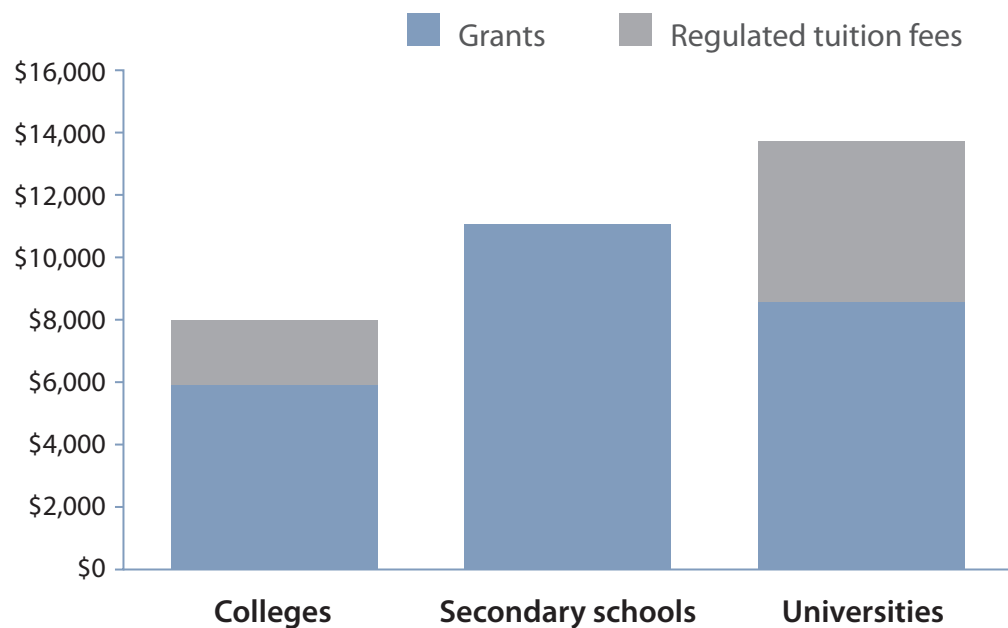
Notes: Ontario figures exclude the tuition set-aside and collaborative and second-entry nursing and clinical education funding for collaborative nursing. Operating grants and enrolments are for provincially funded activity and exclude apprenticeship. Enrolment and funding data for Quebec are for full-time students.

Sources: Colleges Ontario, Ontario Ministry of Training Colleges and Universities, relevant provincial ministries.

- When college operating grants and tuition fees are considered together, in 2009-10 per student revenue in Ontario (\$8,164) was the lowest among the provinces.

3.0 TRENDS IN COLLEGE FUNDING – CONTD.

Figure 5. Operating funding and regulated tuition fees per student for Ontario education sectors, 2010-11



Notes: Figures for colleges exclude the tuition set-aside and collaborative and second-entry nursing and clinical education funding for collaborative nursing. Fees for universities are for first year arts and science.

Sources: Ministry of Training, Colleges and Universities and Ontario Public School Boards Association.

- On a per student basis, funding for Ontario colleges continues to lag that received by publicly funded secondary schools and universities.

3.0 TRENDS IN COLLEGE FUNDING – CONTD.

Table 1. Summary of apprenticeship per diem history, 1995-96 to 2010-11

	Per diem fee	Student fee	Total apprenticeship budget per student	Ontario CPI (constant 2002 dollars)	Per diem in constant 2002 dollars	Total per student apprenticeship budget in constant 2002 dollars
1995-96	\$58.64	n/a	\$58.64	86.8	\$67.56	\$67.56
1996-97	\$58.64	n/a	\$58.64	88.2	\$66.49	\$66.49
1997-98	\$58.64	n/a	\$58.64	89.8	\$65.30	\$65.30
1998-99	\$58.64	n/a	\$58.64	90.6	\$64.72	\$64.72
1999-00	\$58.64	n/a	\$58.64	92.4	\$63.46	\$63.46
2000-01	\$58.64	n/a	\$58.64	95.1	\$61.66	\$61.66
2001-02	\$59.81	n/a	\$59.81	98.0	\$61.03	\$61.03
2002-03	\$51.01	\$10	\$61.01	100.0	\$51.01	\$61.01
2003-04	\$52.23	\$10	\$62.23	102.7	\$50.86	\$60.59
2004-05	\$53.47	\$10	\$63.47	104.6	\$51.12	\$60.68
2005-06	\$54.74	\$10	\$64.74	106.9	\$51.21	\$60.56
2006-07	\$56.03	\$10	\$66.03	108.8	\$51.50	\$60.69
2007-08	\$56.03	\$10	\$66.03	110.8	\$50.57	\$59.59
2008-09	\$57.35	\$10	\$67.35	113.3	\$50.62	\$59.44
2009-10	\$57.35	\$10	\$67.35	113.7	\$50.44	\$59.23
2010-11	\$57.35	\$10	\$67.35	116.5	\$49.23	\$57.81
Change 1995-96 to 2010-11	-2.2%	n/a	14.9%	34.2%	-27.1%	-14.4%

Notes: Per diem and classroom fee are based on the standard six-hour training day.

Sources: Ontario ministries of Training, Colleges and Universities and Finance, Statistics Canada and Colleges Ontario.

4.0 HUMAN RESOURCES TRENDS

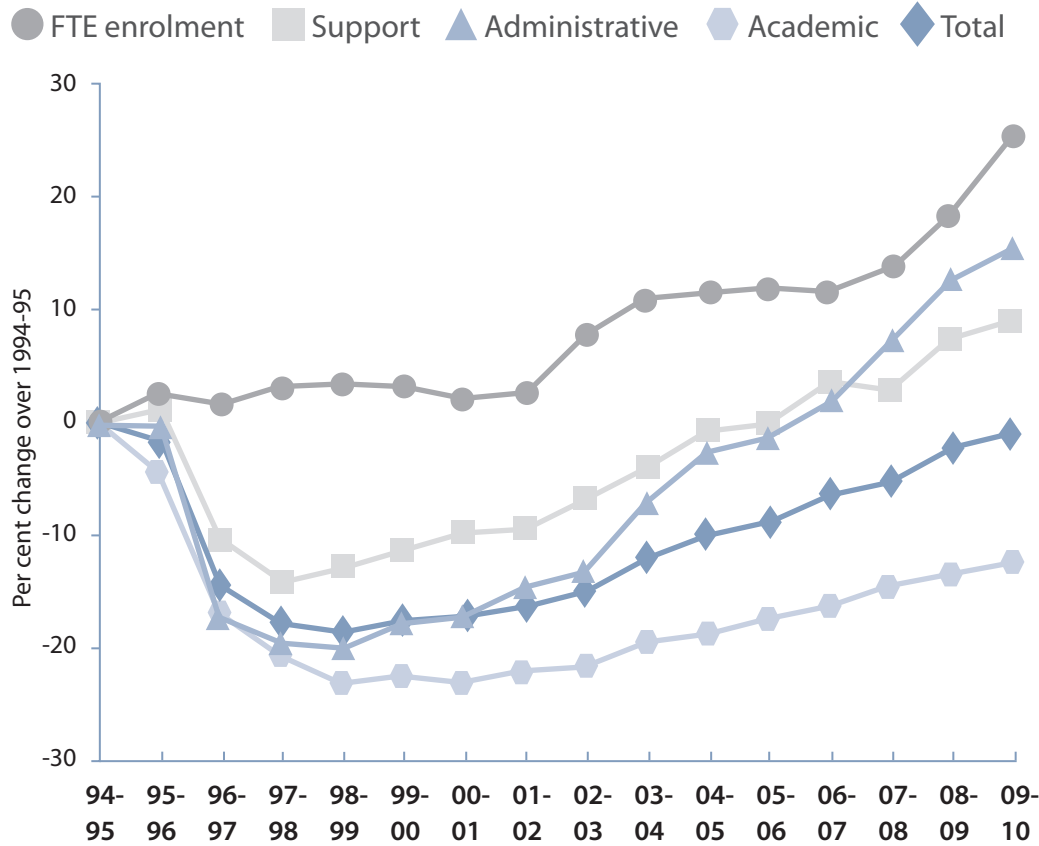
Table 2. College staffing levels, 2009-10

	Full-time	Part-time	Total
Academic staff	7,151	14,021	21,172
Support staff	6,830	9,447	16,277
Administrative staff	2,116	n/a	2,116
Total	16,097	23,468	39,565

Source: College Employer Council.

4.0 HUMAN RESOURCES TRENDS – CONTD.

Figure 6. Changes in full-time college staff and FTE enrolment levels, 1994-95 to 2009-10 (indexed to 1994-95)



Sources: College Employer Council, Ontario Ministry of Training, Colleges and Universities and Colleges Ontario.

- The number of full-time staff at colleges decreased slightly from 1994-95 to 2009-10, by one per cent. In contrast, the number of students (FTEs) increased significantly during this period.

5.0 STUDENT FINANCIAL AID

Table 3. Levels of student assistance and number of recipients*

Year	Canada student loan (current \$)	Ontario student loan (current \$)	No. of college OSAP recipients	Total full-time postsecondary enrolment**	% of total
1995-96	215,629,393	185,478,505	73,096	134,127	54%
1996-97	260,511,404	241,772,883	72,329	134,409	54%
1997-98	267,928,680	246,830,445	71,885	135,831	53%
1998-99	253,665,820	210,114,562	68,539	136,170	50%
1999-00	236,765,028	195,673,536	63,767	137,342	46%
2000-01	208,400,244	175,446,527	55,648	135,136	41%
2001-02	191,759,052	161,653,012	51,042	138,103	37%
2002-03	195,144,941	162,868,898	52,055	146,106	36%
2003-04	209,840,409	165,630,631	54,133	150,759	36%
2004-05	211,635,640	178,704,456	55,384	151,521	37%
2005-06	261,777,389	195,504,480	59,605	151,105	39%
2006-07	279,555,035	203,166,375	63,390	151,147	42%
2007-08	294,604,639	193,135,259	66,994	155,124	43%
2008-09	316,441,612	204,509,499	71,737	161,130	45%
2009-10	291,087,395	228,198,638	81,328	171,110	48%

*Ontario Student Loan entitlement includes Canada Millennium Bursary. Students may receive an Ontario Student Opportunity Grant (OSOG) for the portion of the loan that exceeds \$7000. Commencing in 1999-00, Millennium Bursary recipients may receive enhanced OSOG for the portion of the loan that exceeds \$6,500.

** Full-time postsecondary head count (excludes other, sponsored and international students).

Source: Ontario Ministry of Training, Colleges and Universities.

5.0 STUDENT FINANCIAL AID – CONTD.

Table 4. OSAP default rates by type of institution, 2008 and 2009

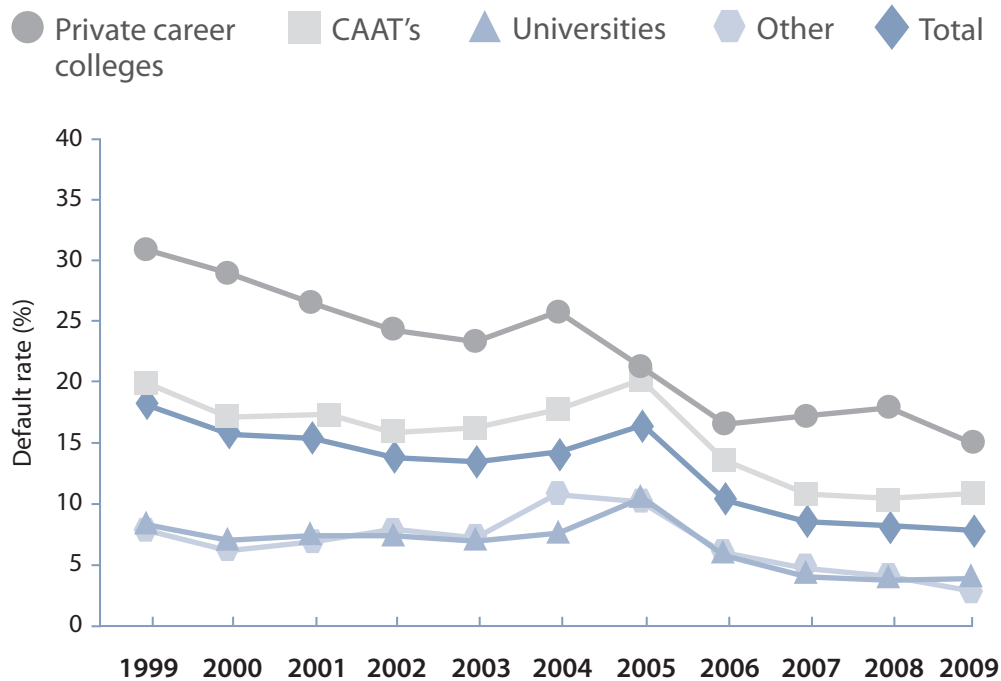
Type of institution	Rate for 2009 (%)	Rate for 2008 (%)
Colleges	11.0	10.6
Universities	4.0	3.9
Private career colleges	15.1	18.0
Other institutions	3.1	4.3
Postsecondary system total	8.0	8.4

Source: OSAP (<http://osap.gov.on.ca>).

- The OSAP default rate for colleges falls between that for universities and private career colleges.

5.0 STUDENT FINANCIAL AID – CONTD.

Figure 7. OSAP loan default rates, 1999-2009



Source: OSAP (<http://osap.gov.on.ca>).

- The total default rate for all postsecondary institutions in 2009 was eight per cent, less than half of what it had been in 1999 (18.2 per cent).

6.0 APPENDICES

Appendix 1. Operating grants and regulated tuition fee revenue per FTE, 1996-97 to 2011-12

Academic Year	1996-97	1997-98	1998-99	1999-00	2000-01	2001-02	2002-03	2003-04	2004-05
Total operating grants ¹ (\$Millions)	\$689	\$687	\$699	\$709	\$722	\$746	\$768	\$869	\$922
FTE ²	166,165	168,560	169,367	168,997	166,912	169,923	179,080	183,374	182,404
Total operating grants per FTE	\$4,145	\$4,073	\$4,127	\$4,196	\$4,327	\$4,389	\$4,286	\$4,737	\$5,053
Ontario CPI (constant 2002 dollars) ³	88.2	89.8	90.6	92.4	95.1	98.0	100.0	102.7	104.6
Total operating grants per FTE – constant dollars	\$4,700	\$4,535	\$4,555	\$4,541	\$4,550	\$4,479	\$4,286	\$4,612	\$4,830
Tuition fee revenue per FTE ⁴	\$1,275	\$1,403	\$1,543	\$1,684	\$1,718	\$1,752	\$1,786	\$1,820	\$1,820
Tuition fee revenue per FTE – constant dollars	\$1,446	\$1,562	\$1,703	\$1,823	\$1,807	\$1,788	\$1,786	\$1,772	\$1,740
Tuition set-aside per FTE	\$17	\$55	\$97	\$139	\$150	\$160	\$170	\$180	\$180
Net tuition fee revenue per FTE	\$1,258	\$1,348	\$1,446	\$1,545	\$1,569	\$1,592	\$1,616	\$1,640	\$1,640
Net tuition fee revenue per FTE – constant dollars	\$1,427	\$1,501	\$1,596	\$1,672	\$1,649	\$1,625	\$1,616	\$1,597	\$1,568
Total operating grants plus net tuition fees per FTE	\$5,404	\$5,421	\$5,573	\$5,741	\$5,895	\$5,981	\$5,902	\$6,377	\$6,693
Total operating grants plus net tuition fees per FTE – constant dollars	\$6,127	\$6,036	\$6,151	\$6,213	\$6,199	\$6,103	\$5,902	\$6,209	\$6,398

Academic Year	2005-06	2006-07	2007-08	2008-09	2009-10	2010-11	2011-12	Per cent change 1996-97 to 2011-12
Total operating grants ¹ (\$Millions)	\$1,019	\$1,105	\$1,177	\$1,238	\$1,257	\$1,263	\$1,277	85.4
FTE ²	182,900	182,255	185,932	193,420	204,885	215,130	221,584	33.4
Total operating grants per FTE	\$5,569	\$6,065	\$6,331	\$6,402	\$6,136	\$5,873	\$5,763	39.0
Ontario CPI (constant 2002 dollars) ³	106.9	108.8	110.8	113.3	113.7	116.5	118.0	33.8
Total operating grants per FTE – constant dollars	\$5,209	\$5,575	\$5,714	\$5,651	\$5,397	\$5,041	\$4,884	3.9
Tuition fee revenue per FTE ⁴	\$1,820	\$1,911	\$2,008	\$2,110	\$2,208	\$2,311	\$2,409	89.0
Tuition fee revenue per FTE – constant dollars	\$1,703	\$1,756	\$1,812	\$1,862	\$1,942	\$1,984	\$2,042	41.2
Tuition set-aside per FTE	\$180	\$180	\$180	\$180	\$180	\$190	\$200	
Net tuition fee revenue per FTE	\$1,640	\$1,731	\$1,828	\$1,930	\$2,028	\$2,121	\$2,209	75.5
Net tuition fee revenue per FTE – constant dollars	\$1,534	\$1,591	\$1,650	\$1,703	\$1,784	\$1,820	\$1,872	31.2
Total operating grants plus net tuition fees per FTE	\$7,209	\$7,796	\$8,159	\$8,332	\$8,164	\$7,993	\$7,972	47.5
Total operating grants plus net tuition fees per FTE – constant dollars	\$6,743	\$7,166	\$7,363	\$7,354	\$7,180	\$6,861	\$6,756	10.3

¹ Figures exclude CERF and collaborative and second entry nursing and clinical education funding for collaborative nursing.

² Enrolment figures assume an increase of 5% in 2010-11 and 3% in 2011-12.

³ Sources include Statistics Canada, Ontario Ministries of Training, Colleges and Universities and Finance.

⁴ Regulated tuition fees. Figures up to 2010-11 were obtained from MTCU and are based on tuition fee reports submitted by colleges. For 2011-12, a tuition increase of 4.25% is assumed.

Appendix 2. Number of awards to college students by student type

Student group	2002-03	2003-04	2004-05	2005-06	2006-07	2007-08	2008-09	2009-10
Dependent at home	11,443	12,362	12,577	13,581	14,651	16,011	17,172	20,233
Dependent away	14,773	15,364	15,076	15,675	16,765	18,261	19,821	21,512
Independent*	14,045	14,821	16,508	19,063	20,535	21,256	22,807	26,331
Married	5,777	5,883	5,757	5,809	5,837	5,690	5,942	6,770
Sole support	6,011	5,703	5,466	5,477	5,602	5,775	5,995	6,481
Other	6	0	0	0	0	1	0	1
Total	52,055	54,133	55,384	59,605	63,390	66,994	71,737	81,328

*Prior to 2004-05, includes students who qualify as independent students under the Canada Student Loans Program and dependent students under the Ontario Student Loans Program.

Source: Ontario Ministry of Training, Colleges and Universities.

Appendix 3. Average loan entitlement to college students by student type*

Student group	2002-03	2003-04	2004-05	2005-06	2006-07	2007-08	2008-09	2009-10
Dependent at home	3,467	3,676	3,825	3,826	3,727	3,577	3,527	2,720
Dependent away	6,160	6,360	6,416	6,803	6,713	6,549	6,388	5,685
Independent**	6,363	6,512	6,903	8,001	8,146	8,254	8,431	6,701
Married	9,938	10,117	10,147	11,156	11,134	11,956	11,995	10,111
Sole support	13,395	13,375	13,378	14,853	14,870	15,772	15,968	14,973
Other	6,988	0	0	0	0	1,544	0	10,389
Total	6,878	6,936	7,048	7,672	7,615	7,280	7,262	6,385

*Canada Student Loan & Ontario Student Loan entitlement divided by number of awards. Entitlement includes Canada Millennium Bursary. Students may receive an Ontario Student Opportunity Grant (OSOG) for the portion of the loan that exceeds \$7,000. Commencing in 1999-00, Millennium Bursary recipients may receive enhanced OSOG for the portion of the loan that exceeds \$6,500.

**Prior to 2004-05, includes students who qualify as independent students under the Canada Student Loans Program and dependent students under the Ontario Student Loans Program.

Source: Ontario Ministry of Training, Colleges and Universities.

Appendix 4. Distribution of loan recipients by student group and sector, 2009-10

	Married/sole support		Independent		Dependent	
	Number	Per cent	Number	Per cent	Number	Per cent
Colleges of applied arts and technology	13,251	16.3%	26,331	32.4%	41,745	51.3%
Universities	7,879	5.5%	42,372	29.4%	93,764	65.1%
Private career colleges (formerly PVSs)	5,586	46.5%	4,686	39.0%	1,730	14.4%